

S.W. 1/4 OF SECTION 21, T.7N., R.1E., S.L.B. & M.

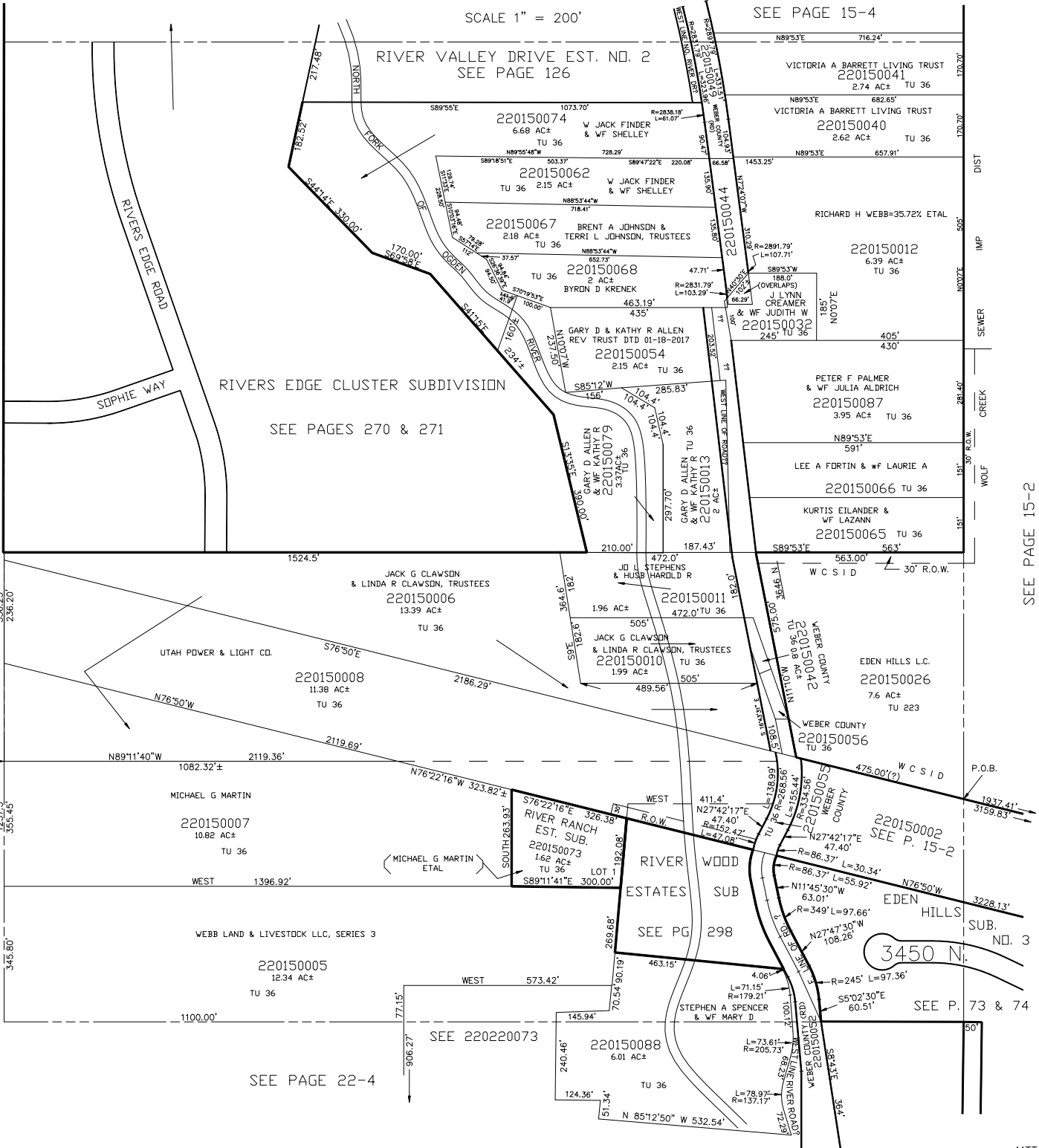
TAXING UNIT: 36, 223

IN WEBER COUNTY

SCALE 1" = 200'

SEE PAGE 15-4

RIVER VALLEY DRIVE EST. NO. 2
SEE PAGE 126



SEE PAGE 13

SEE PAGE 15-2

701.25' N

1237.5'
355.45'

345.80'

*ADDRESS AFFIDAVIT E#2879547